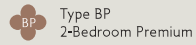


Type A
1-Bedroom



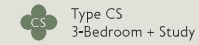
Type B
2-Bedroom



Type BP
2-Bedroom Premium



Type C
3-Bedroom



Type CS
3-Bedroom + Study



Type DS
4-Bedroom + Study

2

UNIT FLOOR	01	02	03	04	05	06
06	BP1b	C2(h)	C2(h)	BP4	DS3(h)	CS6(h)
05	BP1b	C2	C2	BP4	DS3	CS6
04	BP1b	C2	C2	BP4	DS3	CS6
03	BP1b	C2	C2	BP4	DS3	CS6
02	BP1b	C2	C2	BP4	DS3	CS6
01	BP1b(p)	C2(p)	C2(p)	BP4(p)	DS3(p)	CS6(p)

4

UNIT FLOOR	07	08	09	10	11	12
CS3(h)	DS3(h)	BP4	C2(h)	C2	BP1b	
CS3	DS3	BP4	C2	C2	BP1b	
CS3	DS3	BP4	C2	C2	BP1b	
CS3	DS3	BP4	C2	C2	BP1b	
CS3	DS3	BP4	C2	C2	BP1b	
CS3(p)	DS3(p)	BP4(p)	C2(p)	C2(p)	BP1b(p)	

6

UNIT FLOOR	13	14	15	16	17	18	19	20	21	22
10	A1a	B3	A3	A1c	BP3a	A2	BP5	CS5	A1b	A1a
09	A1a	B3	A3	A1c	BP3a	A2	BP5	CS5	A1b	A1a
08	A1a	B3	A3	A1c	BP3a	A2	BP5	CS5	A1b	A1a
07	A1a	B3	A3	A1c	BP3a	A2	BP5	CS5	A1b	A1a
06	A1a	B3	A3	A1c	BP3a	A2	BP5	CS5	A1b	A1a
05	A1a	B3	A3	A1c	BP3a	A2	BP5	CS5	A1b	A1a
04	A1a	B3	A3	A1c	BP3a	A2	BP5	CS5	A1b	A1a
03	A1a	B3	A3	A1c	BP3a	A2	BP5	CS5	A1b	A1a
02	A1a	B3	A3	A1c	BP3a	A2	BP5	CS5	A1b	A1a
01	A1a(p)	B3(p)	A3(p)	—	BP3a(p)	A2(p)	BP5(p)	CS5(p)	A1b(p)	A1a(p)

8

UNIT FLOOR	23	24	25	26	27	28
10	CS1	—	BP3b	C1	B2a	BP1a
09	CS1	—	BP3b	C1	B2a	BP1a
08	CS1	—	BP3b	C1	B2a	BP1a
07	CS1	—	BP3b	C1	B2a	BP1a
06	CS1	DS1	BP3b	C1	B2a	BP1a
05	CS1	DS1	BP3b	C1	B2a	BP1a
04	CS1	DS1	BP3b	C1	B2a	BP1a
03	CS1	DS1	BP3b	C1	B2a	BP1a
02	CS1	DS1	BP3b	C1	B2a	BP1a
01	CS1(p)	DS1(p)	—	C1(p)	B2a(p)	BP1a(p)

10

UNIT FLOOR	29	30	31	32	33	34
CS2	—	BP3b	C1	B2a	BP1a	
CS2	—	BP3b	C1	B2a	BP1a	
CS2	—	BP3b	C1	B2a	BP1a	
CS2	—	BP3b	C1	B2a	BP1a	
CS2	DS2	BP3b	C1	B2a	BP1a	
CS2	DS2	BP3b	C1	B2a	BP1a	
CS2	DS2	BP3b	C1	B2a	BP1a	
CS2	DS2	BP3b	C1	B2a	BP1a	
CS2	DS2	BP3b	C1	B2a	BP1a	
CS2(p)	DS2(p)	—	C1(p)	B2a(p)	BP1a(p)	

12

UNIT FLOOR	35	36	37	38	39	40	41	42	43	44	45
10	A1a	A1b	CS7	A4	BP3a	A1c	A1c	BP6	—	A1b	A1a
09	A1a	A1b	CS7	A4	BP3a	A1c	A1c	BP6	—	A1b	A1a
08	A1a	A1b	CS7	A4	BP3a	A1c	A1c	BP6	—	A1b	A1a
07	A1a	A1b	CS7	A4	BP3a	A1c	A1c	BP6	—	A1b	A1a
06	A1a	A1b	CS7	A4	BP3a	A1c	A1c	BP6	C6	A1b	A1a
05	A1a	A1b	CS7	A4	BP3a	A1c	A1c	BP6	C6	A1b	A1a
04	A1a	A1b	CS7	A4	BP3a	A1c	A1c	BP6	C6	A1b	A1a
03	A1a	A1b	CS7	A4	BP3a	A1c	A1c	BP6	C6	A1b	A1a
02	A1a	A1b	CS7	A4	BP3a	A1c	A1c	BP6	C6	A1b	A1a
01	A1a(p)	A1b(p)	CS7(p)	A4	BP3a(p)	—	A1c(p)	BP6(p)	C6(p)	A1b(p)	A1a(p)

14

UNIT FLOOR	46	47	48	49	50	51	52
02	A1a	C4	CS2	BP1c	C3	A1a	A1a
01	A1a(p)	C4(p)	CS2(p)	BP1c(p)	C3(p)	A1a(p)	A1a(p)

16

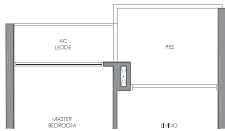
UNIT FLOOR	53	54	55	56	57	58	59	60
02	A1a	A1a	C3	B2b	BP1c	CS2	C4	A1a
01	A1a(p)	A1a(p)	C3(p)	B2b(p)	BP1c(p)	CS2(p)	C4(p)	A1a(p)

18

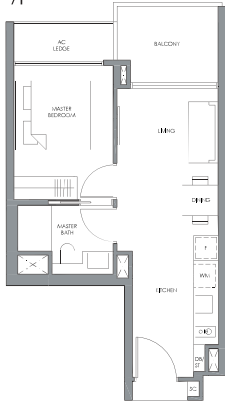
UNIT FLOOR	61	62	63	64	65	66	67	68	69	70
06	BP1b	A1d	CS4a(h)	CS4b(h)	B1	A1c	A1c	BP2	CS5(h)	A1d
05	BP1b	A1d	CS4a	CS4b	B1	A1c	A1c	BP2	CS5	A1d
04	BP1b	A1d	CS4a	CS4b	B1	A1c	A1c	BP2	CS5	A1d
03	BP1b	A1d	CS4a	CS4b	B1	A1c	A1c	BP2	CS5	A1d
02	BP1b	A1d	CS4a	CS4b	B1	A1c	A1c	BP2	CS5	A1d
01	BP1b(p)	A1d(p)	CS4a(p)	CS4b(p)	B1(p)	A1c(p)	A1c(p)	BP2(p)	CS5(p)	A1d(p)

1-Bedroom

Type A1a(p)



Type A1a



Fridge
Induction Hob
Shoe Cabinet
Washer cum Dryer
Distribution Board / Store

F
IH
SC
WM
DB/ST



Type A1a(p)

45 sq m / 484 sq ft
Inclusive of 6 sq m PES
& 3 sq m AC Ledge

Block 6
#01-13
#01-22 *

Block 14
#01-46 *
#01-51
#01-52 *

Block 12
#01-35
#01-45 *

Block 16
#01-53
#01-54 *
#01-60

0 1 3 5M
* Mirror Image ^ High Ceiling



Type A1a

45 sq m / 484 sq ft
Inclusive of 6 sq m Balcony
& 3 sq m AC Ledge

Block 6
#02-13 to #10-13
#02-22 to #10-22 *

Block 12
#02-35 to #10-35
#02-45 to #10-45 *

Block 14
#02-46 * ^
#02-51
#02-52 * ^

Block 16
#02-53 ^
#02-54 * ^
#02-60 ^



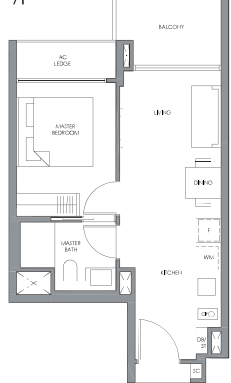
All plans are subject to change as may be required or approved by the relevant authorities. All floor areas are approximate measurements only and are subject to final survey. The balcony shall not be enclosed except with the approved balcony screen. For an illustration of the approved balcony screen, please refer to the diagram annexed hereto as "Annexure 1".

1-Bedroom

Type A1b(p)



Type A1b



Fridge
Induction Hob
Shoe Cabinet
Washer cum Dryer
Distribution Board / Store

F
IH
SC
WM
DB/ST



Type A1b(p)

45 sq m / 484 sq ft
Inclusive of 6 sq m PES
& 3 sq m AC Ledge

Block 6
#01-21

Block 12
#01-36 *
#01-44



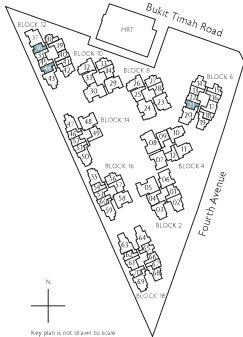
Type A1b

45 sq m / 484 sq ft
Inclusive of 6 sq m Balcony
& 3 sq m AC Ledge

Block 6
#02-21 to #10-21

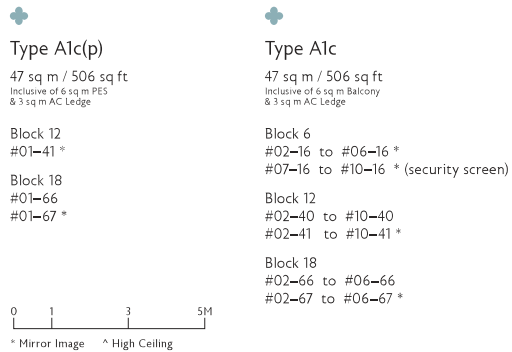
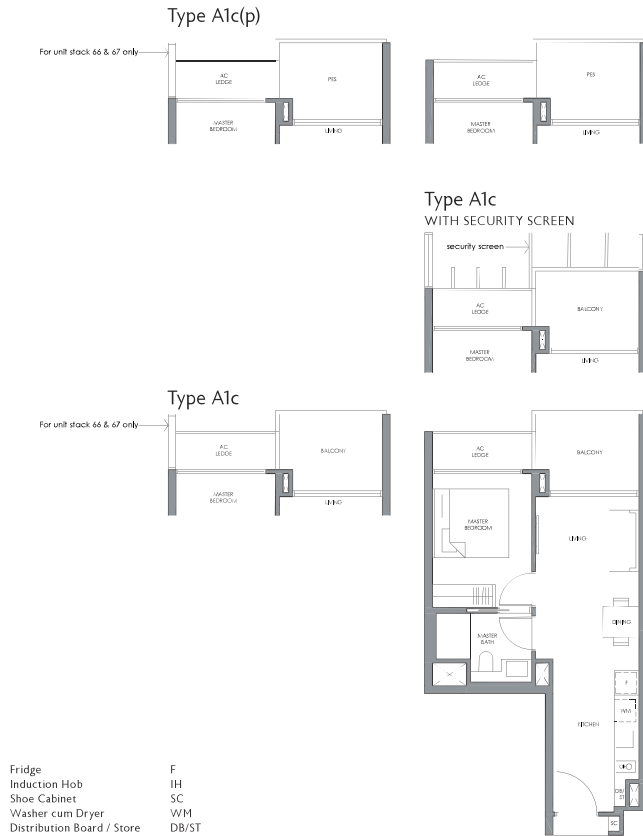
Block 12
#02-36 to #10-36 *
#02-44 to #10-44

0 1 3 5M
* Mirror Image ^ High Ceiling



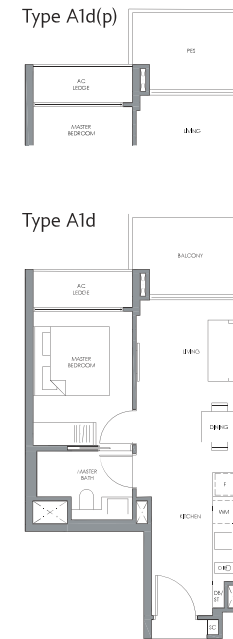
All plans are subject to change as may be required or approved by the relevant authorities. All floor areas are approximate measurements only and are subject to final survey. The balcony shall not be enclosed except with the approved balcony screen. For an illustration of the approved balcony screen, please refer to the diagram annexed hereto as "Annexure 1".

1-Bedroom



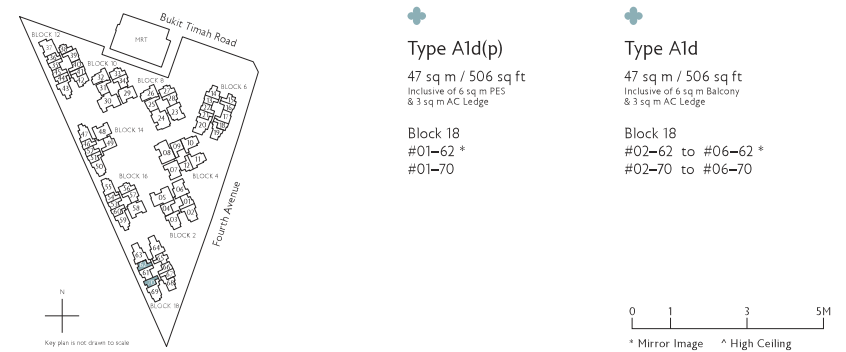
All plans are subject to change as may be required or approved by the relevant authorities. All floor areas are approximate measurements only and are subject to final survey. The balcony shall not be enclosed except with the approved balcony screen. For an illustration of the approved balcony screen, please refer to the diagram annexed hereto as "Annexure 1".

1-Bedroom



Legend:

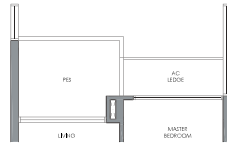
- Fridge
- Induction Hob
- Shoe Cabinet
- Washer cum Dryer
- Distribution Board / Store
- F
- IH
- SC
- WM
- DB/ST



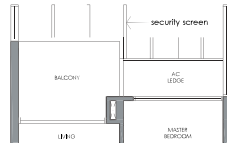
All plans are subject to change as may be required or approved by the relevant authorities. All floor areas are approximate measurements only and are subject to final survey. The balcony shall not be enclosed except with the approved balcony screen. For an illustration of the approved balcony screen, please refer to the diagram annexed hereto as "Annexure 1".

1-Bedroom

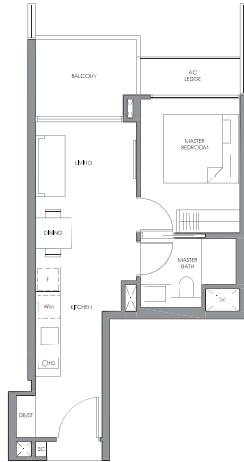
Type A2(p)



Type A2
WITH SECURITY SCREEN



Type A2



Fridge
Induction Hob
Shoe Cabinet
Washer cum Dryer
Distribution Board / Store

F
IH
SC
WM
DB/ST



Type A2(p)

46 sq m / 495 sq ft
Inclusive of 6 sq m PES
& 3 sq m AC Ledge

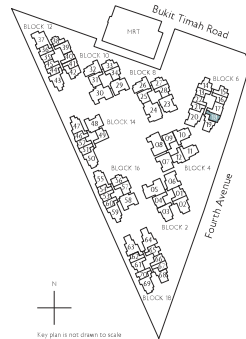
Block 6
#01-18



Type A2

46 sq m / 495 sq ft
Inclusive of 6 sq m Balcony
& 3 sq m AC Ledge

Block 6
#02-18 to #06-18
#07-18 to #10-18 (security screen)

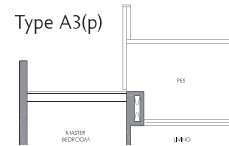


0 1 3 5M
* Mirror Image ^ High Ceiling

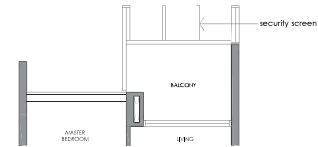
All plans are subject to change as may be required or approved by the relevant authorities. All floor areas are approximate measurements only and are subject to final survey. The balcony shall not be enclosed except with the approved balcony screen. For an illustration of the approved balcony screen, please refer to the diagram annexed hereto as "Annexure 1".

1-Bedroom

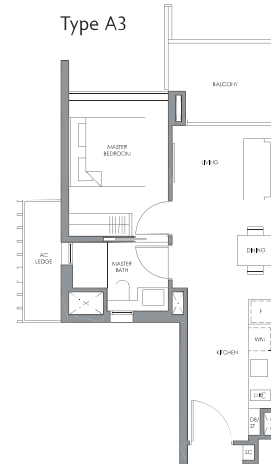
Type A3(p)



Type A3
WITH SECURITY SCREEN



Type A3



Fridge
Induction Hob
Shoe Cabinet
Washer cum Dryer
Distribution Board / Store

F
IH
SC
WM
DB/ST



Type A3(p)

48 sq m / 517 sq ft
Inclusive of 6 sq m PES
& 4 sq m AC Ledge

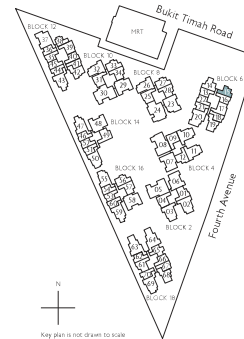
Block 6
#01-15



Type A3

48 sq m / 517 sq ft
Inclusive of 6 sq m Balcony
& 4 sq m AC Ledge

Block 6
#02-15 to #06-15
#07-15 to #10-15 (security screen)

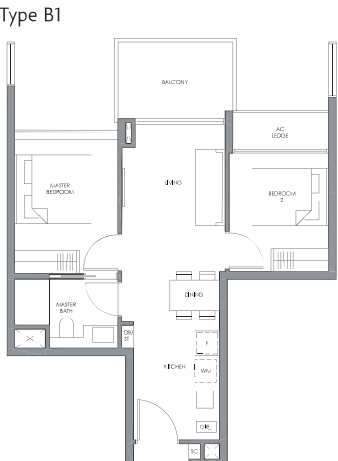
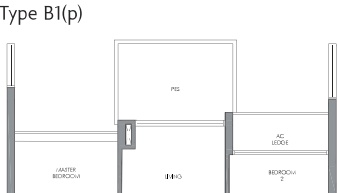
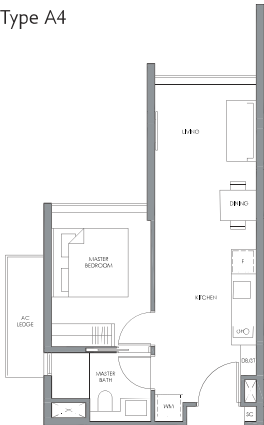


0 1 3 5M
* Mirror Image ^ High Ceiling

All plans are subject to change as may be required or approved by the relevant authorities. All floor areas are approximate measurements only and are subject to final survey. The balcony shall not be enclosed except with the approved balcony screen. For an illustration of the approved balcony screen, please refer to the diagram annexed hereto as "Annexure 1".

1-Bedroom

2-Bedroom



Fridge
Induction Hob
Shoe Cabinet
Washer cum Dryer
Distribution Board / Store

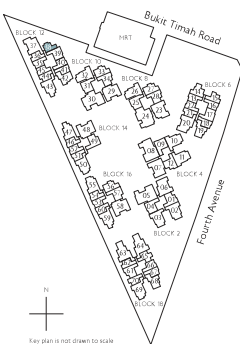
F
IH
SC
WM
DB/ST

Fridge
Induction Hob
Shoe Cabinet
Washer cum Dryer
Distribution Board / Store

F
IH
SC
WM
DB/ST

 Type A4
44 sq m / 474 sq ft
Inclusive of 4 sq m AC Ledge

Block 12
#01-38 to #10-38



0 1 3 5M
* Mirror Image ^ High Ceiling

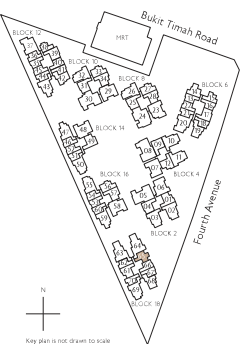
All plans are subject to change as may be required or approved by the relevant authorities. All floor areas are approximate measurements only and are subject to final survey. The balcony shall not be enclosed except with the approved balcony screen. For an illustration of the approved balcony screen, please refer to the diagram annexed hereto as "Annexure 1".

 Type B1(p)
58 sq m / 624 sq ft
Inclusive of 7 sq m PES
& 3 sq m AC Ledge

Block 18
#01-65

 Type B1
58 sq m / 624 sq ft
Inclusive of 7 sq m Balcony
& 3 sq m AC Ledge

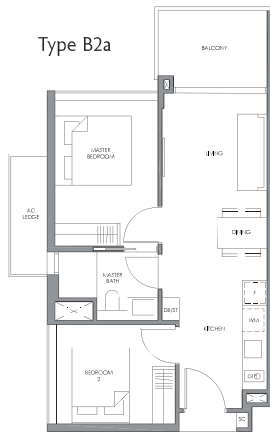
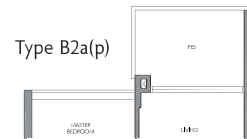
Block 18
#02-65 to #06-65



0 1 3 5M
* Mirror Image ^ High Ceiling

All plans are subject to change as may be required or approved by the relevant authorities. All floor areas are approximate measurements only and are subject to final survey. The balcony shall not be enclosed except with the approved balcony screen. For an illustration of the approved balcony screen, please refer to the diagram annexed hereto as "Annexure 1".

2-Bedroom



Fridge
Induction Hob
Shoe Cabinet
Washer cum Dryer
Distribution Board / Store

F
IH
SC
WM
DB/ST

✦
Type B2a(p)
60 sq m / 646 sq ft
Inclusive of 6 sq m PES
& 4 sq m AC Ledge

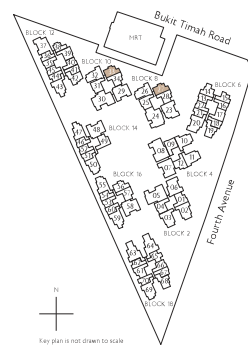
Block 8
#01-27

Block 10
#01-33

✦
Type B2a
60 sq m / 646 sq ft
Inclusive of 6 sq m Balcony
& 4 sq m AC Ledge

Block 8
#02-27 to #10-27

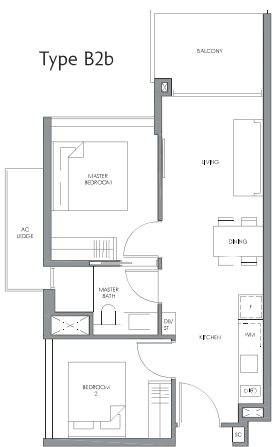
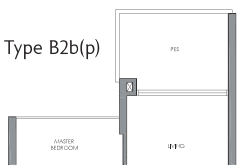
Block 10
#02-33 to #10-33



0 1 3 5M
* Mirror Image ^ High Ceiling

All plans are subject to change as may be required or approved by the relevant authorities. All floor areas are approximate measurements only and are subject to final survey. The balcony shall not be enclosed except with the approved balcony screen. For an illustration of the approved balcony screen, please refer to the diagram annexed hereto as "Annexure 1"

2-Bedroom



Fridge
Induction Hob
Shoe Cabinet
Washer cum Dryer
Distribution Board / Store

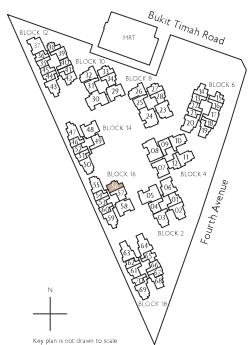
F
IH
SC
WM
DB/ST

✦
Type B2b(p)
60 sq m / 646 sq ft
Inclusive of 6 sq m PES
& 4 sq m AC Ledge

Block 16
#01-56

✦
Type B2b
60 sq m / 646 sq ft
Inclusive of 6 sq m Balcony
& 4 sq m AC Ledge

Block 16
#02-56 ^

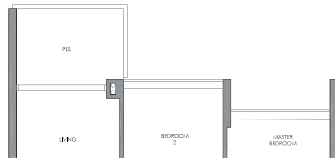


0 1 3 5M
* Mirror Image ^ High Ceiling

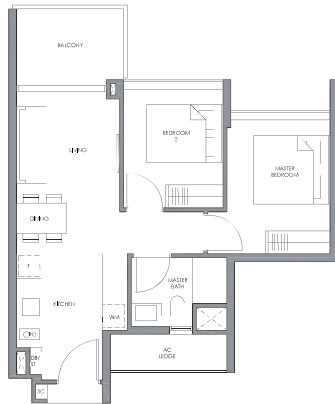
All plans are subject to change as may be required or approved by the relevant authorities. All floor areas are approximate measurements only and are subject to final survey. The balcony shall not be enclosed except with the approved balcony screen. For an illustration of the approved balcony screen, please refer to the diagram annexed hereto as "Annexure 1"

2-Bedroom

Type B3(p)



Type B3



Fridge
Induction Hob
Shoe Cabinet
Washer cum Dryer
Distribution Board / Store

F
IH
SC
WM
DB/ST

Type B3(p)

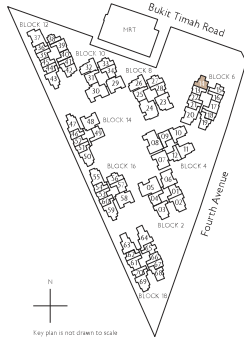
60 sq m / 646 sq ft
Inclusive of 6 sq m PES
& 4 sq m AC Ledge

Block 6
#01-14

Type B3

60 sq m / 646 sq ft
Inclusive of 6 sq m Balcony
& 4 sq m AC Ledge

Block 6
#02-14 to #10-14

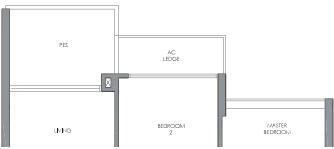


0 1 3 5M
* Mirror Image ^ High Ceiling

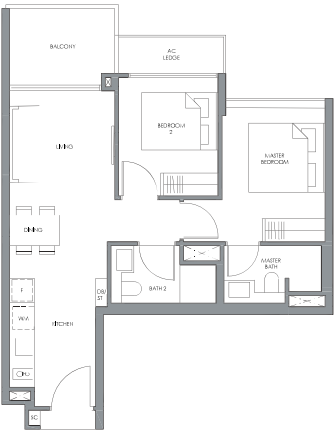
All plans are subject to change as may be required or approved by the relevant authorities. All floor areas are approximate measurements only and are subject to final survey. The balcony shall not be enclosed except with the approved balcony screen. For an illustration of the approved balcony screen, please refer to the diagram annexed hereto as "Annexure 1"

2-Bedroom Premium

Type BP1a(p)



Type BP1a



Fridge
Induction Hob
Shoe Cabinet
Washer cum Dryer
Distribution Board / Store

F
IH
SC
WM
DB/ST

Type BP1a(p)

64 sq m / 689 sq ft
Inclusive of 6 sq m PES
& 3 sq m AC Ledge

Block 8
#01-28

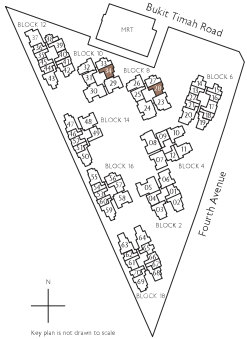
Block 10
#01-34

Type BP1a

64 sq m / 689 sq ft
Inclusive of 6 sq m Balcony
& 3 sq m AC Ledge

Block 8
#02-28 to #10-28

Block 10
#02-34 to #10-34

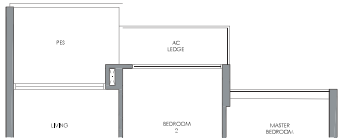


0 1 3 5M
* Mirror Image ^ High Ceiling

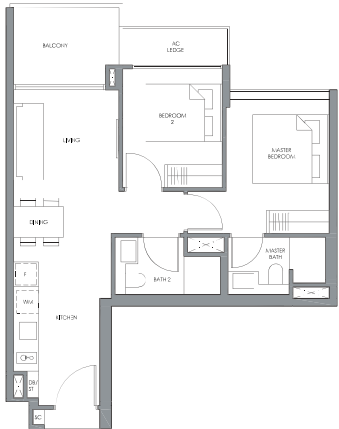
All plans are subject to change as may be required or approved by the relevant authorities. All floor areas are approximate measurements only and are subject to final survey. The balcony shall not be enclosed except with the approved balcony screen. For an illustration of the approved balcony screen, please refer to the diagram annexed hereto as "Annexure 1"

2-Bedroom Premium

Type BP1b(p)



Type BP1b



Fridge
Induction Hob
Shoe Cabinet
Washer cum Dryer
Distribution Board / Store

F
IH
SC
WM
DB/ST

Type BP1b(p)

64 sq m / 689 sq ft
Inclusive of 6 sq m PES
& 3 sq m AC Ledge

Block 2
#01-01 *

Block 4
#01-12

Block 18
#01-61 *

Type BP1b

64 sq m / 689 sq ft
Inclusive of 6 sq m PES
& 3 sq m AC Ledge

Block 2
#02-01 to #06-01 *

Block 4
#02-12 to #06-12

Block 18
#02-61 to #06-61 *

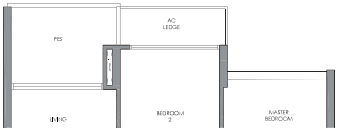
0 1 3 5M
* Mirror Image ^ High Ceiling



All plans are subject to change as may be required or approved by the relevant authorities. All floor areas are approximate measurements only and are subject to final survey. The balcony shall not be enclosed except with the approved balcony screen. For an illustration of the approved balcony screen, please refer to the diagram annexed hereto as "Annexure 1"

2-Bedroom Premium

Type BP1c(p)



Type BP1c



Fridge
Induction Hob
Shoe Cabinet
Washer cum Dryer
Distribution Board / Store

F
IH
SC
WM
DB/ST

Type BP1c(p)

65 sq m / 700 sq ft
Inclusive of 6 sq m PES
& 3 sq m AC Ledge

Block 14
#01-49 *

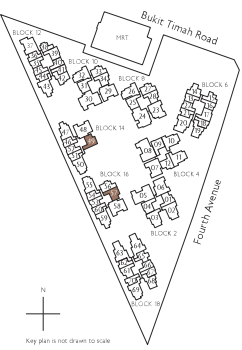
Block 16
#01-57

Type BP1c

65 sq m / 700 sq ft
Inclusive of 6 sq m PES
& 3 sq m AC Ledge

Block 14
#02-49 *^

Block 16
#02-57 ^

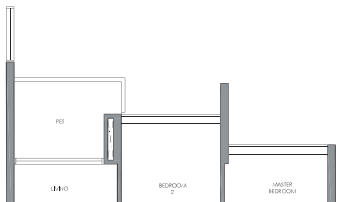


0 1 3 5M
* Mirror Image ^ High Ceiling

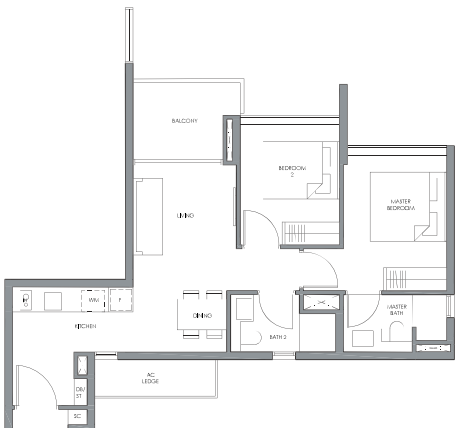
All plans are subject to change as may be required or approved by the relevant authorities. All floor areas are approximate measurements only and are subject to final survey. The balcony shall not be enclosed except with the approved balcony screen. For an illustration of the approved balcony screen, please refer to the diagram annexed hereto as "Annexure 1"

2-Bedroom Premium

Type BP2(p)



Type BP2



Fridge
Induction Hob
Shoe Cabinet
Washer cum Dryer
Distribution Board / Store

F
IH
SC
WM
DB/ST

Type BP2(p)

66 sq m / 710 sq ft
Inclusive of 6 sq m PES
& 4 sq m AC Ledge

Block 18
#01-68

Type BP2

66 sq m / 710 sq ft
Inclusive of 6 sq m Balcony
& 4 sq m AC Ledge

Block 18
#02-68 to #06-68

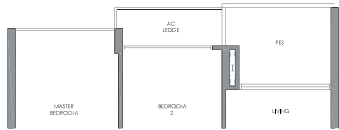
0 1 3 5M
* Mirror Image ^ High Ceiling



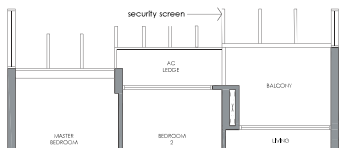
N
Key plan is not drawn to scale

All plans are subject to change as may be required or approved by the relevant authorities. All floor areas are approximate measurements only and are subject to final survey. The balcony shall not be enclosed except with the approved balcony screen. For an illustration of the approved balcony screen, please refer to the diagram annexed hereto as "Annexure 1".

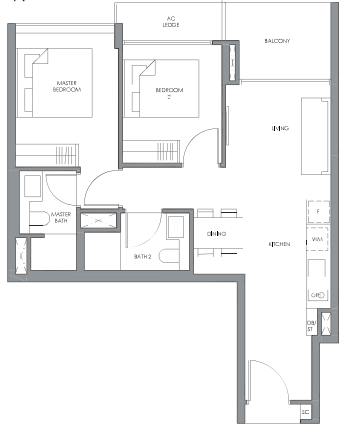
Type BP3a(p)



Type BP3a
WITH SECURITY SCREEN



Type BP3a



2-Bedroom Premium

Fridge
Induction Hob
Shoe Cabinet
Washer cum Dryer
Distribution Board / Store

F
IH
SC
WM
DB/ST

Type BP3a(p)

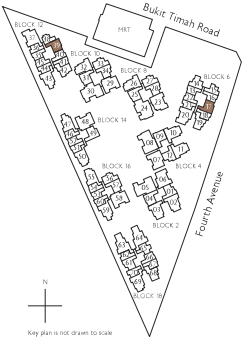
66 sq m / 710 sq ft
Inclusive of 6 sq m PES
& 3 sq m AC Ledge

Block 6
#01-17
Block 12
#01-39 *

Type BP3a

66 sq m / 710 sq ft
Inclusive of 6 sq m Balcony
& 3 sq m AC Ledge

Block 6
#02-17 to #06-17
#07-17 to #10-17 (security screen)
Block 12
#02-39 to #10-39 *



N
Key plan is not drawn to scale

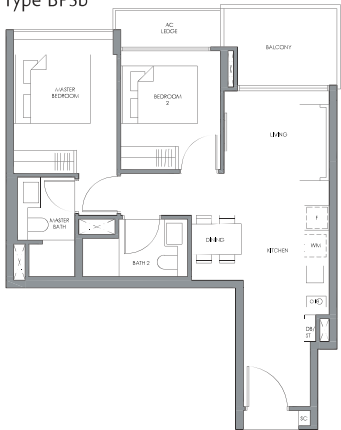
0 1 3 5M
* Mirror Image ^ High Ceiling

All plans are subject to change as may be required or approved by the relevant authorities. All floor areas are approximate measurements only and are subject to final survey. The balcony shall not be enclosed except with the approved balcony screen. For an illustration of the approved balcony screen, please refer to the diagram annexed hereto as "Annexure 1".

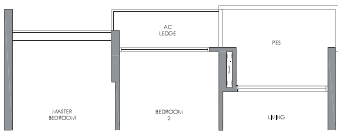
2-Bedroom Premium

2-Bedroom Premium

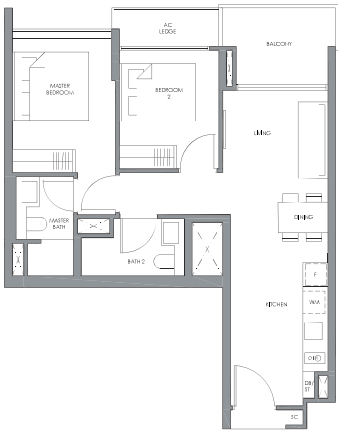
Type BP3b



Type BP4(p)



Type BP4



Fridge
Induction Hob
Shoe Cabinet
Washer cum Dryer
Distribution Board / Store

F
IH
SC
WM
DB/ST

Fridge
Induction Hob
Shoe Cabinet
Washer cum Dryer
Distribution Board / Store

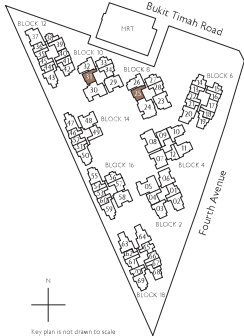
F
IH
SC
WM
DB/ST



Type BP3b

66 sq m / 710 sq ft
Inclusive of 6 sq m Balcony
& 3 sq m AC Ledge

Block 8
#02-25 to #10-25
Block 10
#02-31 to #10-31



0 1 3 5M
* Mirror Image ^ High Ceiling



Key plan is not drawn to scale

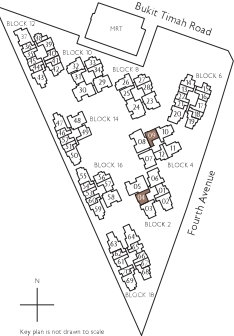
All plans are subject to change as may be required or approved by the relevant authorities. All floor areas are approximate measurements only and are subject to final survey. The balcony shall not be enclosed except with the approved balcony screen. For an illustration of the approved balcony screen, please refer to the diagram annexed hereto as "Annexure 1"



Type BP4(p)

66 sq m / 710 sq ft
Inclusive of 6 sq m PES
& 3 sq m AC Ledge

Block 2
#01-04
Block 4
#01-09 *



Key plan is not drawn to scale

All plans are subject to change as may be required or approved by the relevant authorities. All floor areas are approximate measurements only and are subject to final survey. The balcony shall not be enclosed except with the approved balcony screen. For an illustration of the approved balcony screen, please refer to the diagram annexed hereto as "Annexure 1"



Type BP4

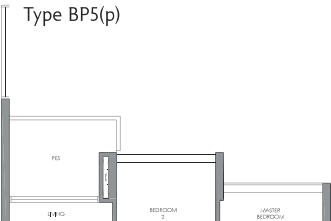
66 sq m / 710 sq ft
Inclusive of 6 sq m Balcony
& 3 sq m AC Ledge

Block 2
#02-04 to #06-04
Block 4
#02-09 to #06-09 *

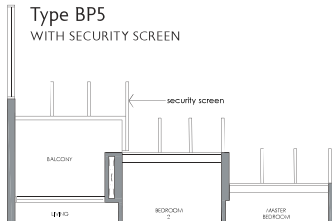
0 1 3 5M
* Mirror Image ^ High Ceiling

2-Bedroom Premium

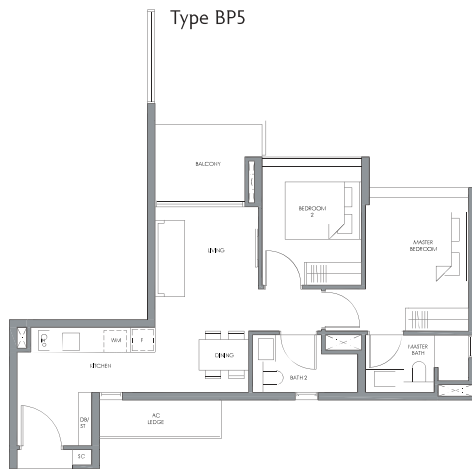
Type BP5(p)



Type BP5
WITH SECURITY SCREEN



Type BP5



Fridge
Induction Hob
Shoe Cabinet
Washer cum Dryer
Distribution Board / Store

F
IH
SC
WM
DB/ST

Type BP5(p)

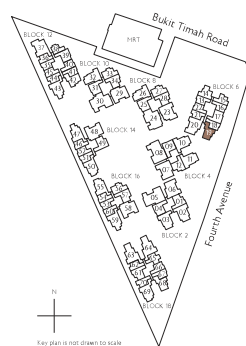
66 sq m / 710 sq ft
Inclusive of 6 sq m PES
& 4 sq m AC Ledge

Block 6
#01-19

Type BP5

66 sq m / 710 sq ft
Inclusive of 6 sq m Balcony
& 4 sq m AC Ledge

Block 6
#02-19 to #06-19
#07-19 to #10-19 (security screen)

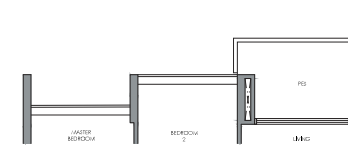


0 1 3 5M
^ Mirror Image ^ High Ceiling

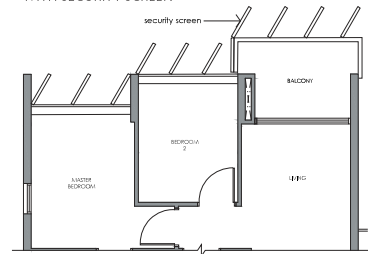
All plans are subject to change as may be required or approved by the relevant authorities. All floor areas are approximate measurements only and are subject to final survey. The balcony shall not be enclosed except with the approved balcony screen. For an illustration of the approved balcony screen, please refer to the diagram annexed hereto as "Annexure 1"

2-Bedroom Premium

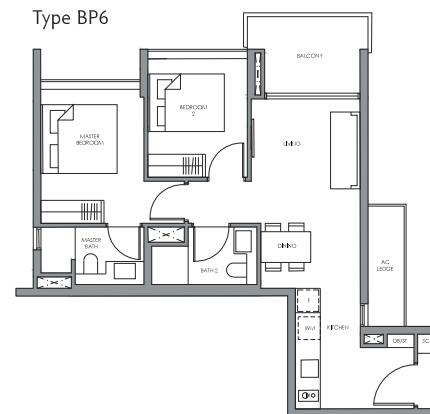
Type BP6(p)



Type BP6
WITH SECURITY SCREEN



Type BP6



Fridge
Induction Hob
Shoe Cabinet
Washer cum Dryer
Distribution Board / Store

F
IH
SC
WM
DB/ST

Type BP6(p)

67 sq m / 721 sq ft
Inclusive of 6 sq m PES
& 4 sq m AC Ledge

Block 12
#01-42

Type BP6

67 sq m / 721 sq ft
Inclusive of 6 sq m Balcony
& 4 sq m AC Ledge

Block 12
#02-42 to #07-42
#08-42 to #10-42 (security screen)



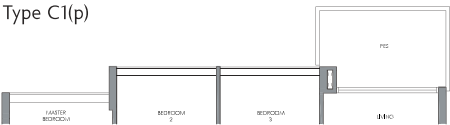
0 1 3 5M
^ Mirror Image ^ High Ceiling

All plans are subject to change as may be required or approved by the relevant authorities. All floor areas are approximate measurements only and are subject to final survey. The balcony shall not be enclosed except with the approved balcony screen. For an illustration of the approved balcony screen, please refer to the diagram annexed hereto as "Annexure 1"

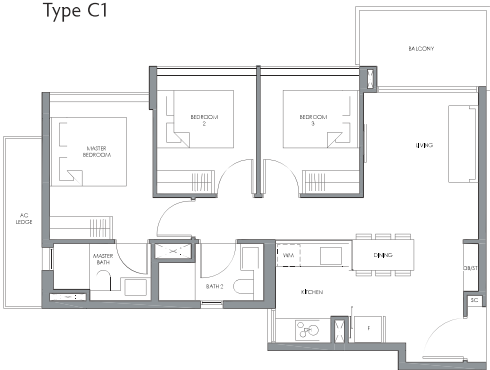
3-Bedroom

3-Bedroom

Type C1(p)



Type C1



Fridge
Gas Hob
Shoe Cabinet
Washer cum Dryer
Distribution Board / Store

F
GH
SC
WM
DB/ST

Type C1(p)
85 sq m / 915 sq ft
Inclusive of 7 sq m PES
& 5 sq m AC Ledge

Block 8

#01-26

Block 10

#01-32

Type C1
85 sq m / 915 sq ft
Inclusive of 7 sq m Balcony
& 5 sq m AC Ledge

Block 8

#02-26 to #10-26

Block 10

#02-32 to #10-32

0 1 3 5M
* Mirror Image ^ High Ceiling



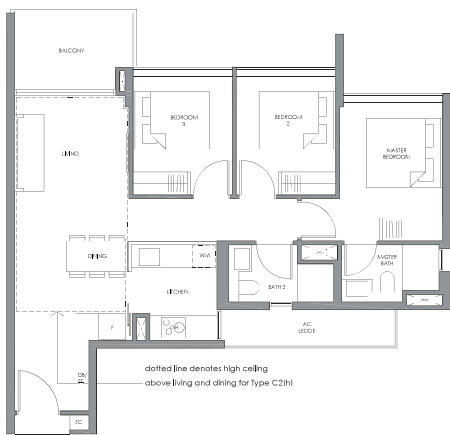
N
Key plan is not drawn to scale

All plans are subject to change as may be required or approved by the relevant authorities. All floor areas are approximate measurements only and are subject to final survey. The balcony shall not be enclosed except with the approved balcony screen. For an illustration of the approved balcony screen, please refer to the diagram annexed hereto as "Annexure 1"

Type C2(p)



Type C2
Type C2(h)



Fridge
Gas Hob
Shoe Cabinet
Washer cum Dryer
Distribution Board / Store

F
GH
SC
WM
DB/ST

Type C2(p)
88 sq m / 947 sq ft
Inclusive of 7 sq m PES
& 5 sq m AC Ledge

Block 2

#01-02

#01-03 *

Block 4

#01-10

#01-11 *

Type C2
88 sq m / 947 sq ft
Inclusive of 7 sq m Balcony
& 5 sq m AC Ledge

Block 2

#02-02 to #05-02

#02-03 to #05-03 *

Block 4

#02-10 to #05-10

#02-11 to #06-11 *

Type C2(h)
88 sq m / 947 sq ft
Inclusive of 7 sq m Balcony
& 5 sq m AC Ledge

Block 2

#06-02

#06-03 *

Block 4

#06-10



N
Key plan is not drawn to scale

0 1 3 5M
* Mirror Image ^ High Ceiling

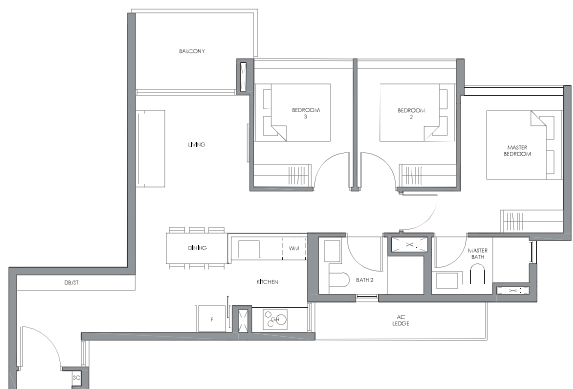
All plans are subject to change as may be required or approved by the relevant authorities. All floor areas are approximate measurements only and are subject to final survey. The balcony shall not be enclosed except with the approved balcony screen. For an illustration of the approved balcony screen, please refer to the diagram annexed hereto as "Annexure 1"

3-Bedroom

Type C3(p)



Type C3



Fridge
Gas Hob
Shoe Cabinet
Washer cum Dryer
Distribution Board / Store

F
GH
SC
WM
DB/ST



Type C3(p)

89 sq m / 958 sq ft
Inclusive of 7 sq m PES
& 5 sq m AC Ledge

Block 14
#01-50 *

Block 16
#01-55



Type C3

89 sq m / 958 sq ft
Inclusive of 7 sq m Balcony
& 5 sq m AC Ledge

Block 14
#02-50 *^

Block 16
#02-55 ^



0 1 3 5M
* Mirror Image ^ High Ceiling

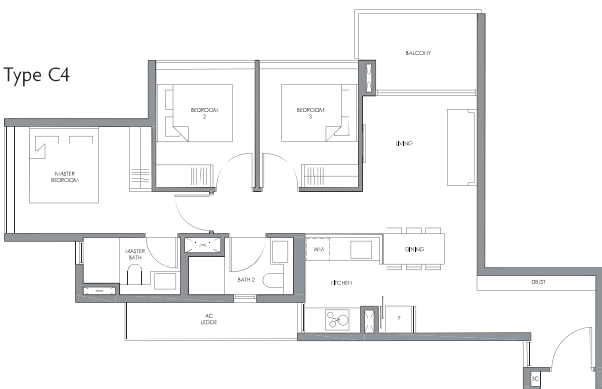
All plans are subject to change as may be required or approved by the relevant authorities. All floor areas are approximate measurements only and are subject to final survey. The balcony shall not be enclosed except with the approved balcony screen. For an illustration of the approved balcony screen, please refer to the diagram annexed hereto as "Annexure 1"

3-Bedroom

Type C4(p)



Type C4



Fridge
Gas Hob
Shoe Cabinet
Washer cum Dryer
Distribution Board / Store

F
GH
SC
WM
DB/ST



Type C4(p)

89 sq m / 958 sq ft
Inclusive of 7 sq m PES
& 5 sq m AC Ledge

Block 14
#01-47 *

Block 16
#01-59

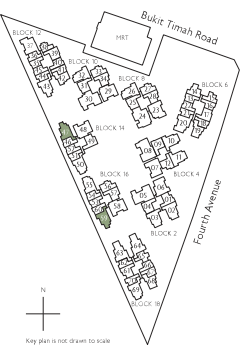


Type C4

89 sq m / 958 sq ft
Inclusive of 7 sq m Balcony
& 5 sq m AC Ledge

Block 14
#02-47 *^

Block 16
#02-59 ^



0 1 3 5M
* Mirror Image ^ High Ceiling

All plans are subject to change as may be required or approved by the relevant authorities. All floor areas are approximate measurements only and are subject to final survey. The balcony shall not be enclosed except with the approved balcony screen. For an illustration of the approved balcony screen, please refer to the diagram annexed hereto as "Annexure 1"

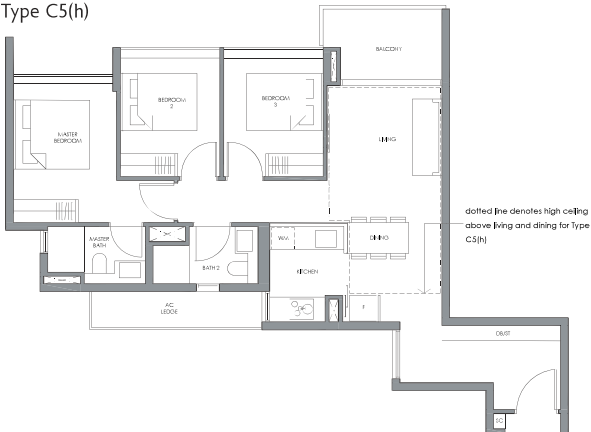
3-Bedroom

3-Bedroom

Type C5(p)



Type C5
Type C5(h)



Fridge
Gas Hob
Shoe Cabinet
Washer cum Dryer
Distribution Board / Store

F
GH
SC
WM
DB/ST



Type C5(p)

90 sq m / 969 sq ft
Inclusive of 6 sq m PES
& 5 sq m AC Ledge

Block 18
#01-69



Type C5

90 sq m / 969 sq ft
Inclusive of 6 sq m Balcony
& 5 sq m AC Ledge

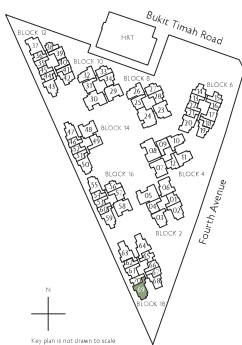
Block 18
#02-69 to #05-69



Type C5(h)

90 sq m / 969 sq ft
Inclusive of 6 sq m Balcony
& 5 sq m AC Ledge

Block 18
#06-69



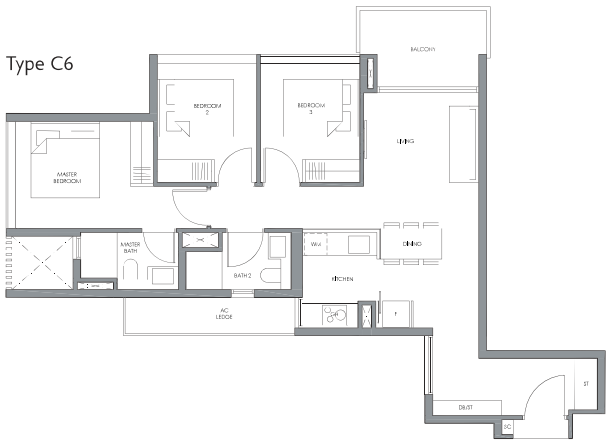
0 1 3 5M
* Mirror Image ^ High Ceiling

All plans are subject to change as may be required or approved by the relevant authorities. All floor areas are approximate measurements only and are subject to final survey. The balcony shall not be enclosed except with the approved balcony screen. For an illustration of the approved balcony screen, please refer to the diagram annexed hereto as "Annexure 1".

Type C6(p)



Type C6



Fridge
Gas Hob
Shoe Cabinet
Washer cum Dryer
Distribution Board / Store

F
GH
SC
WM
DB/ST



Type C6(p)

90 sq m / 969 sq ft
Inclusive of 7 sq m PES
& 5 sq m AC Ledge

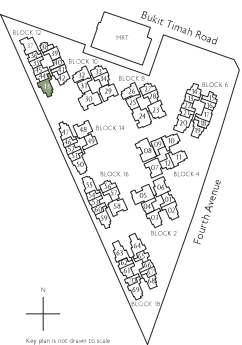
Block 12
#01-43



Type C6

90 sq m / 969 sq ft
Inclusive of 7 sq m Balcony
& 5 sq m AC Ledge

Block 12
#02-43 to #06-43



0 1 3 5M
* Mirror Image ^ High Ceiling

All plans are subject to change as may be required or approved by the relevant authorities. All floor areas are approximate measurements only and are subject to final survey. The balcony shall not be enclosed except with the approved balcony screen. For an illustration of the approved balcony screen, please refer to the diagram annexed hereto as "Annexure 1".

3-Bedroom + Study

Type CS1(p)



Type CS1



Fridge
Gas Hob
Shoe Cabinet
Washer cum Dryer
Distribution Board / Store

F
GH
SC
WM
DB/ST



Type CS1(p)

100 sq m / 1076 sq ft
Inclusive of 13 sq m PES
& 5 sq m AC Ledge

Block 8
#01-23



Type CS1

100 sq m / 1076 sq ft
Inclusive of 13 sq m PES
& 5 sq m AC Ledge

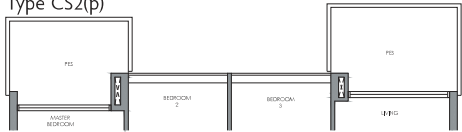
Block 8
#02-23 to #10-23



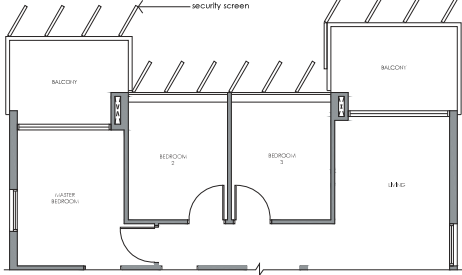
0 1 3 5M
^ Mirror Image ^ High Ceiling

All plans are subject to change as may be required or approved by the relevant authorities. All floor areas are approximate measurements only and are subject to final survey. The balcony shall not be enclosed except with the approved balcony screen. For an illustration of the approved balcony screen, please refer to the diagram annexed hereto as "Annexure 1"

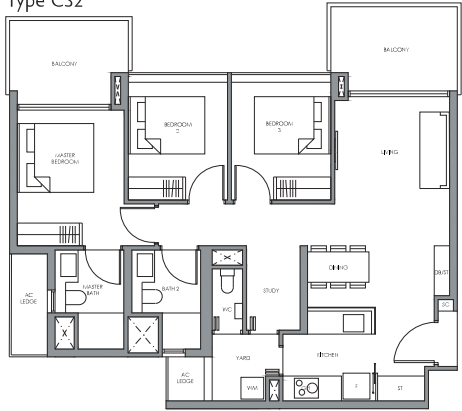
Type CS2(p)



Type CS2
WITH SECURITY SCREEN



Type CS2



3-Bedroom + Study

Fridge
Gas Hob
Shoe Cabinet
Washer cum Dryer
Distribution Board / Store

F
GH
SC
WM
DB/ST



Type CS2(p)

103 sq m / 1109 sq ft
Inclusive of 15 sq m PES
& 5 sq m AC Ledge

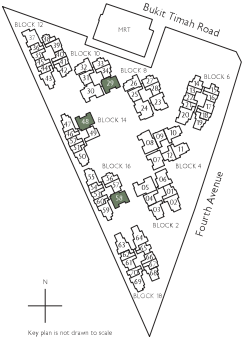
Block 10
#01-29
Block 14
#01-48 ^
Block 16
#01-58



Type CS2

103 sq m / 1109 sq ft
Inclusive of 15 sq m PES
& 5 sq m AC Ledge

Block 10
#02-29 to #07-29
#08-29 to #10-29 (security screen)
Block 14
#02-48 ^
Block 16
#02-58 ^



0 1 3 5M
^ Mirror Image ^ High Ceiling

All plans are subject to change as may be required or approved by the relevant authorities. All floor areas are approximate measurements only and are subject to final survey. The balcony shall not be enclosed except with the approved balcony screen. For an illustration of the approved balcony screen, please refer to the diagram annexed hereto as "Annexure 1"

3-Bedroom + Study

Type CS3(p)



Type CS3
Type CS3(h)



Fridge
Gas Hob
Shoe Cabinet
Washer cum Dryer
Distribution Board / Store

F
GH
SC
WM
DB/ST

Type CS3(p)
105 sq m / 1130 sq ft
Inclusive of 16 sq m PES
& 5 sq m AC Ledge

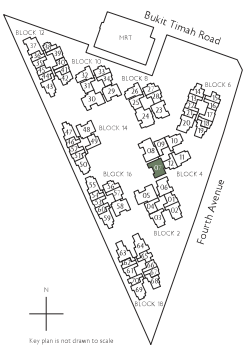
Block 4
#01-07

Type CS3
105 sq m / 1130 sq ft
Inclusive of 16 sq m Balcony
& 5 sq m AC Ledge

Block 4
#02-07 to #05-07

Type CS3(h)
105 sq m / 1130 sq ft
Inclusive of 16 sq m Balcony
& 5 sq m AC Ledge

Block 4
#06-07



0 1 3 5M
* Mirror Image ^ High Ceiling

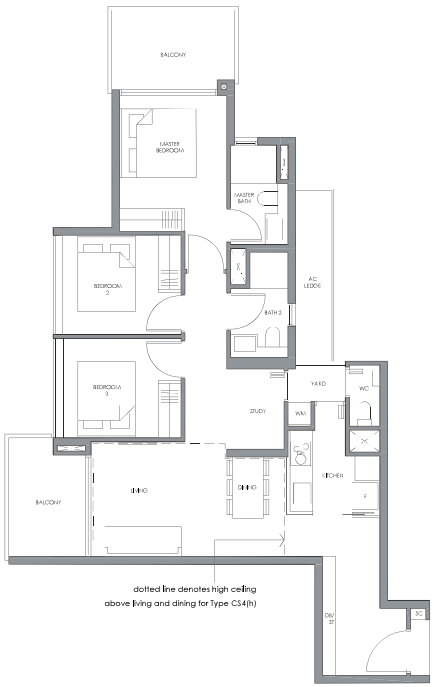
All plans are subject to change as may be required or approved by the relevant authorities. All floor areas are approximate measurements only and are subject to final survey. The balcony shall not be enclosed except with the approved balcony screen. For an illustration of the approved balcony screen, please refer to the diagram annexed hereto as "Annexure 1".

3-Bedroom + Study

Type CS4a(p)



Type CS4a
Type CS4a(h)



Fridge
Gas Hob
Shoe Cabinet
Washer cum Dryer
Distribution Board / Store

F
GH
SC
WM
DB/ST

Type CS4a(p)
103 sq m / 1109 sq ft
Inclusive of 14 sq m PES
& 5 sq m AC Ledge

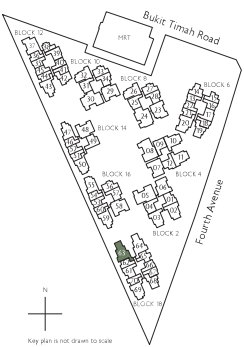
Block 18
#01-63

Type CS4a
103 sq m / 1109 sq ft
Inclusive of 14 sq m Balcony
& 5 sq m AC Ledge

Block 18
#02-63 to #05-63

Type CS4a(h)
103 sq m / 1109 sq ft
Inclusive of 14 sq m Balcony
& 5 sq m AC Ledge

Block 18
#06-63



0 1 3 5M
* Mirror Image ^ High Ceiling

All plans are subject to change as may be required or approved by the relevant authorities. All floor areas are approximate measurements only and are subject to final survey. The balcony shall not be enclosed except with the approved balcony screen. For an illustration of the approved balcony screen, please refer to the diagram annexed hereto as "Annexure 1".

3-Bedroom
+ Study



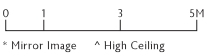
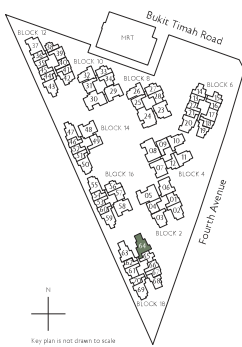
Fridge
Gas Hob
Shoe Cabinet
Washer cum Dryer
Distribution Board / Store

F
GH
SC
WM
DB/ST

Type CS4b(p)
103 sq m / 1109 sq ft
Inclusive of 14 sq m PES
& 5 sq m AC Ledge

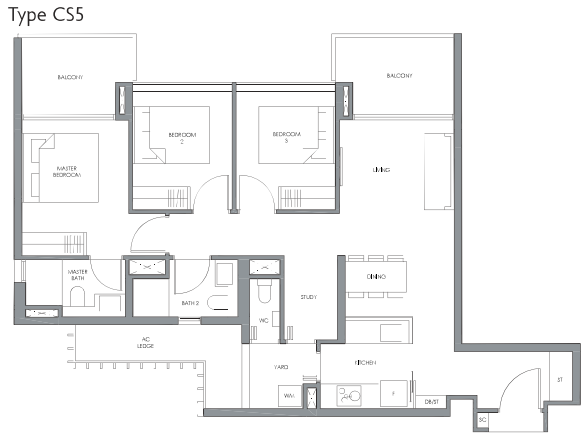
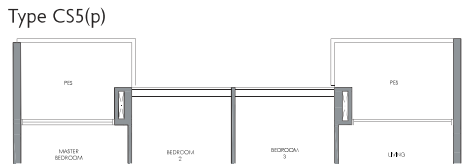
Type CS4b
103 sq m / 1109 sq ft
Inclusive of 14 sq m Balcony
& 5 sq m AC Ledge

Type CS4b(h)
103 sq m / 1109 sq ft
Inclusive of 14 sq m Balcony
& 5 sq m AC Ledge



All plans are subject to change as may be required or approved by the relevant authorities. All floor areas are approximate measurements only and are subject to final survey. The balcony shall not be enclosed except with the approved balcony screen. For an illustration of the approved balcony screen, please refer to the diagram annexed hereto as "Annexure 1".

3-Bedroom
+ Study

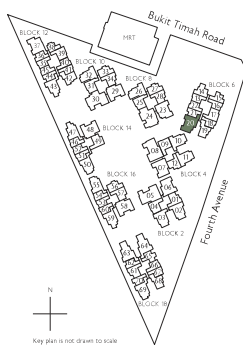


Fridge
Gas Hob
Shoe Cabinet
Washer cum Dryer
Distribution Board / Store

F
GH
SC
WM
DB/ST

Type CS5(p)
103 sq m / 1109 sq ft
Inclusive of 13 sq m PES
& 6 sq m AC Ledge

Type CS5
103 sq m / 1109 sq ft
Inclusive of 13 sq m Balcony
& 6 sq m AC Ledge



All plans are subject to change as may be required or approved by the relevant authorities. All floor areas are approximate measurements only and are subject to final survey. The balcony shall not be enclosed except with the approved balcony screen. For an illustration of the approved balcony screen, please refer to the diagram annexed hereto as "Annexure 1".

3-Bedroom + Study

Type CS6(p)



Type CS6
Type CS6(h)



Fridge
Gas Hob
Shoe Cabinet
Washer cum Dryer
Distribution Board / Store

F
GH
SC
WM
DB/ST



Type CS6(p)

103 sq m / 1109 sq ft
Inclusive of 13 sq m PES
& 5 sq m AC Ledge

Block 2
#01-06



Type CS6

103 sq m / 1109 sq ft
Inclusive of 13 sq m Balcony
& 5 sq m AC Ledge

Block 2
#02-06 to #05-06



Type CS6(h)

103 sq m / 1109 sq ft
Inclusive of 13 sq m Balcony
& 5 sq m AC Ledge

Block 2
#06-06

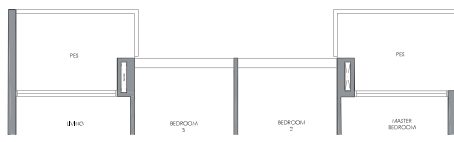


0 1 3 5M
* Mirror Image ^ High Ceiling

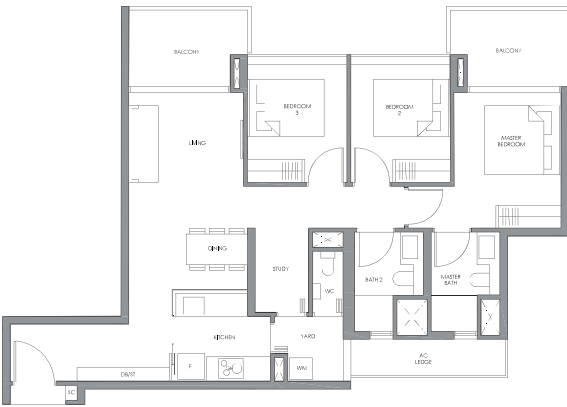
All plans are subject to change as may be required or approved by the relevant authorities. All floor areas are approximate measurements only and are subject to final survey. The balcony shall not be enclosed except with the approved balcony screen. For an illustration of the approved balcony screen, please refer to the diagram annexed hereto as "Annexure 1".

3-Bedroom + Study

Type CS7(p)



Type CS7



Fridge
Gas Hob
Shoe Cabinet
Washer cum Dryer
Distribution Board / Store

F
GH
SC
WM
DB/ST



Type CS7(p)

104 sq m / 1119 sq ft
Inclusive of 13 sq m PES
& 5 sq m AC Ledge

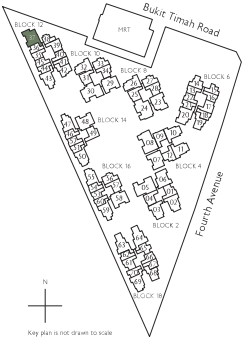
Block 12
#01-37



Type CS7

104 sq m / 1119 sq ft
Inclusive of 13 sq m Balcony
& 5 sq m AC Ledge

Block 12
#02-37 to #10-37



0 1 3 5M
* Mirror Image ^ High Ceiling

All plans are subject to change as may be required or approved by the relevant authorities. All floor areas are approximate measurements only and are subject to final survey. The balcony shall not be enclosed except with the approved balcony screen. For an illustration of the approved balcony screen, please refer to the diagram annexed hereto as "Annexure 1".

4-Bedroom + Study

4-Bedroom + Study

Type DS1(p)



Type DS2(p)



Type DS1



Type DS2



Fridge
Gas Hob
Shoe Cabinet
Washer and Dryer
Distribution Board / Store

F
GH
SC
WD
DB/ST

Fridge
Gas Hob
Shoe Cabinet
Washer and Dryer
Distribution Board / Store

F
GH
SC
WD
DB/ST

Type DS1(p)

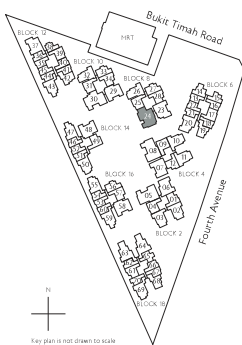
137 sq m / 1475 sq ft
Inclusive of 17 sq m PES
& 5 sq m AC Ledge

Block 8
#01-24

Type DS1

137 sq m / 1475 sq ft
Inclusive of 17 sq m Balcony
& 5 sq m AC Ledge

Block 8
#02-24 to #06-24



0 1 3 5M
^ Mirror Image ^ High Ceiling

N
Key plan is not drawn to scale

All plans are subject to change as may be required or approved by the relevant authorities. All floor areas are approximate measurements only and are subject to final survey. The balcony shall not be enclosed except with the approved balcony screen. For an illustration of the approved balcony screen, please refer to the diagram annexed hereto as "Annexure 1"

Type DS2(p)

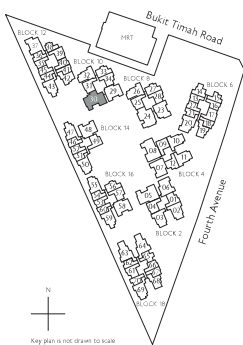
139 sq m / 1496 sq ft
Inclusive of 17 sq m PES
& 5 sq m AC Ledge

Block 10
#01-30

Type DS2

139 sq m / 1496 sq ft
Inclusive of 17 sq m Balcony
& 5 sq m AC Ledge

Block 10
#02-30 to #06-30



N
Key plan is not drawn to scale

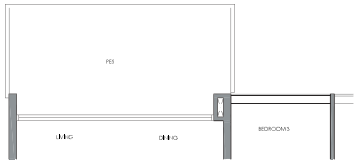
0 1 3 5M
^ Mirror Image ^ High Ceiling

All plans are subject to change as may be required or approved by the relevant authorities. All floor areas are approximate measurements only and are subject to final survey. The balcony shall not be enclosed except with the approved balcony screen. For an illustration of the approved balcony screen, please refer to the diagram annexed hereto as "Annexure 1"

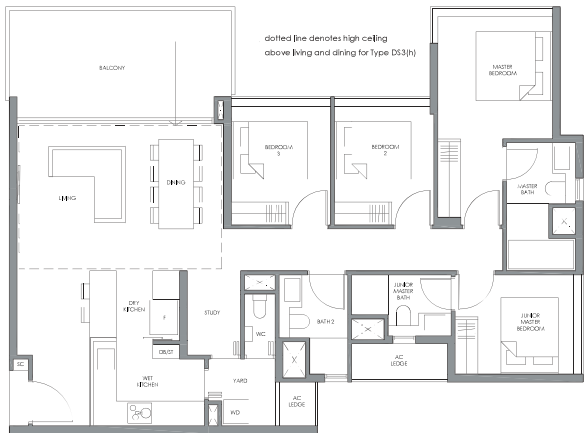
4-Bedroom + Study

Annexure 1

Type DS3(p)



Type DS3
Type DS3(h)



Fridge
Gas Hob
Shoe Cabinet
Washer and Dryer
Distribution Board / Store

F
GH
SC
WD
DB/ST



Type DS3(p)

138 sq m / 1485 sq ft
Inclusive of 17 sq m PES
& 4 sq m AC Ledge

Block 2
#01-05 *

Block 4
#01-08



Type DS3

138 sq m / 1485 sq ft
Inclusive of 17 sq m Balcony
& 4 sq m AC Ledge

Block 2
#02-05 to #05-05 *

Block 4
#02-08 to #05-08

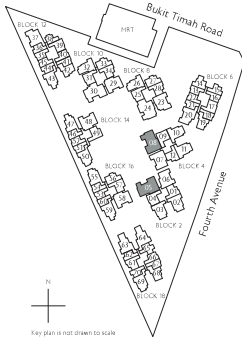


Type DS3(h)

138 sq m / 1485 sq ft
Inclusive of 17 sq m Balcony
& 4 sq m AC Ledge

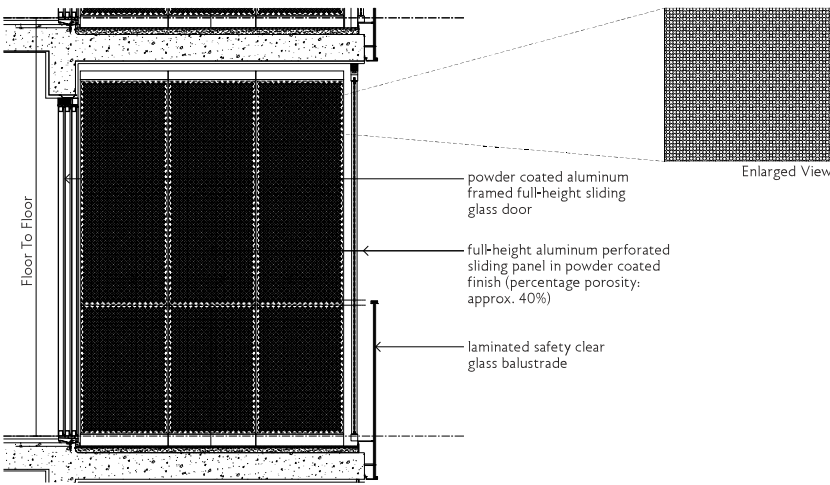
Block 2
#06-05 *

Block 4
#06-08



0 1 3 5M
* Mirror Image ^ High Ceiling

N
Key plan is not drawn to scale



Approved Balcony Screen

Note:
(i) The balcony shall not be enclosed unless with the approved balcony screen (as shown above)
(ii) The installation and cost of the screen shall be borne by the Purchaser

All plans are subject to change as may be required or approved by the relevant authorities. All floor areas are approximate measurements only and are subject to final survey. The balcony shall not be enclosed except with the approved balcony screen. For an illustration of the approved balcony screen, please refer to the diagram annexed hereto as "Annexure 1"